



[Generosity NZ - Grants & Funding](#)

Generosity NZ is the largest digital search facility for funding information in Aotearoa. [read more](#)

info@generosity.org.nz / generosity.org.nz/



[Cromwell Community House](#)

Located in the heart of Cromwell. MISSION STATEMENT To foster community and social development by: Empowering peop... [read more](#)

[03 445 1690](tel:034451690) / cch@xtra.co.nz / www.cromwellresource.co.nz



[Ignite Wanaka Chamber of Commerce](#)

The Ignite Wanaka Chamber of Commerce is a membership-driven, not-for-profit organisation representing the diverse ... [read more](#)

[021 942 502](tel:021942502) / naomi@ignitewanaka.co.nz / www.ignitewanaka.co.nz/



[Wild Things Nanny Service](#)

Welcome to Wild Things where we are all about inspiring today's learners within creative and fun learning environme... [read more](#)

[0800 44 44 70](tel:0800444470) / info@wildthings.org.nz / wildthings.org.nz/



[Work and Income](#)

Work and Income provides employment services and financial assistance throughout New Zealand [read more](#)

[0800 559 009](tel:0800559009) / OnlineSupport@WorkandIncome.govt.nz / www.workandincome.govt.nz



[Support Group For Dyslexia](#)

Dyslexia is often thought of as a literacy problem, but it is not limited to only this area. Other difficulties tha... [read more](#)

[027 485 6798](tel:0274856798) / alma@dyslexiahelp4u.co.nz / www.dyslexiahelp4u.co.nz/



[Food For Love](#)

Food For Love is a charitable trust that delivers home-cooked meals to individuals and families in the Upper Clutha... [read more](#)

[027 365 3350](tel:0273653350) / contact@foodforlovewanaka.com / www.foodforlovewanaka.com/



[Employment New Zealand](#)

For free employment information we're open from Monday to Thursday 8.30am - 5.00pm, Fridays 9.00am - 5.00pm, exclud... [read more](#)

[0800 20 90 20](tel:0800209020) / info@employment.govt.nz / www.employment.govt.nz/

Te Tari Tai Internal A

[Department of Internal Affairs](#)

Welcome to the Department of Internal AffairsThe Department of Internal Affairs serves and connects people, communi... [read more](#)

[04 495 7200](tel:044957200) or [freephone 0800 25 78 87 \(NZ only\)](tel:0800257887) /
<https://www.dia.govt.nz/Contact-Us> / www.dia.govt.nz



[Fluid Recruitment](#)

Fluid Recruitment is a professional recruitment agency that services the Queenstown, Wanaka and Lakes region. We fo... [read more](#)

[03 467 7220](tel:034677220) / Jobs@fluidrecruitment.co.nz /
www.fluidrecruitment.co.nz



[Federated Farmers](#)

Federated Farmers is New Zealand's leading independent rural advocacy organisation.The federation's aim is to add v... [read more](#)

[03 443 1055](tel:034431055) or [0800 327 656](tel:0800327656) / 0800@fedfarm.org.nz /
www.fedfarm.org.nz/



[Federated Farmers - Glenorchy Branch](#)

Federated Farmers is New Zealand's leading independent rural advocacy organisation.The federation's aim is to add v... [read more](#)

[03 442 9942](tel:034429942) / southland@fedfarm.org.nz



[Volunteering Central](#)

Volunteering Central seeks to celebrate, support, highlight and motivate volunteering in the Central Otago Lakes Di... [read more](#)

[\(03\) 555 3071](tel:(03)5553071) / hello@volunteersouth.org.nz / www.volunteeringcentral.org.nz/



[iCan Talent Agency](#)

Established in 2000, ICAN has thrived and expanded to meet the growing domestic and international demands which uti... [read more](#)

[+64 21 818 318](tel:+6421818318) / tracy@icanmodels.com / www.icanmodels.com/



[The Duke of Edinburghs Hillary Award](#)

Open to anyone between the ages of 14-25—regardless of gender, background or ability—young people design their own ... [read more](#)

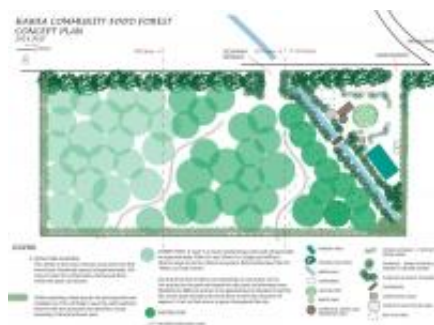
[0800 69 29 27](tel:0800692927) / info@dofehillary.org.nz / dofehillary.org.nz



[Stroke Foundation](#)

We're here to help and support people and their families/whanau affected by stroke. It can be challenging when it h... [read more](#)

[03 471 6175](tel:034716175) / otago@stroke.org.nz / www.stroke.org.nz/home/ / www.stroke.org.nz/community-stroke-advisors



[Hawea Food Forest](#)

We are a community-run food forest and community garden operated by volunteers. [read more](#)

[021 173 1350](tel:0211731350) / admin@haweafoodforest.org / www.facebook.com/groups/HaweaFoodForest



[Citizens Advice Bureau Queenstown](#)

Citizens Advice Bureau provides free and confidential advice to everyone. We take the time to listen to you and equ... [read more](#)

[03 442 6799](tel:034426799) / queenstown@cab.org.nz / www.cab.org.nz



[Advantage South](#)

Advantage South aims to provide the very best help to Southerners looking to get back on their feet after an accide... [read more](#)

[64 3 477 9865](tel:6434779865) / beth.harman@advantagesouth.co.nz / advantagesouth.co.nz/



[Wanaka Community Hub](#)

The Wanaka Community House Charitable Trust was formed to build a Community House for Wanaka. A Community House is ... [read more](#)

[034432071](tel:034432071) / manager@wanakacommunityhub.org.nz / wanakacommunityhub.org.nz/



[Health Shuttles - St.John](#)

The St John Health Shuttle is a free community service that transports people to essential medical and health-relat... [read more](#)

[0800 103 046](tel:0800103046) / enquiries@stjohn.org.nz / www.stjohn.org.nz/What-we-do/Community-programmes/Health-Shuttles/